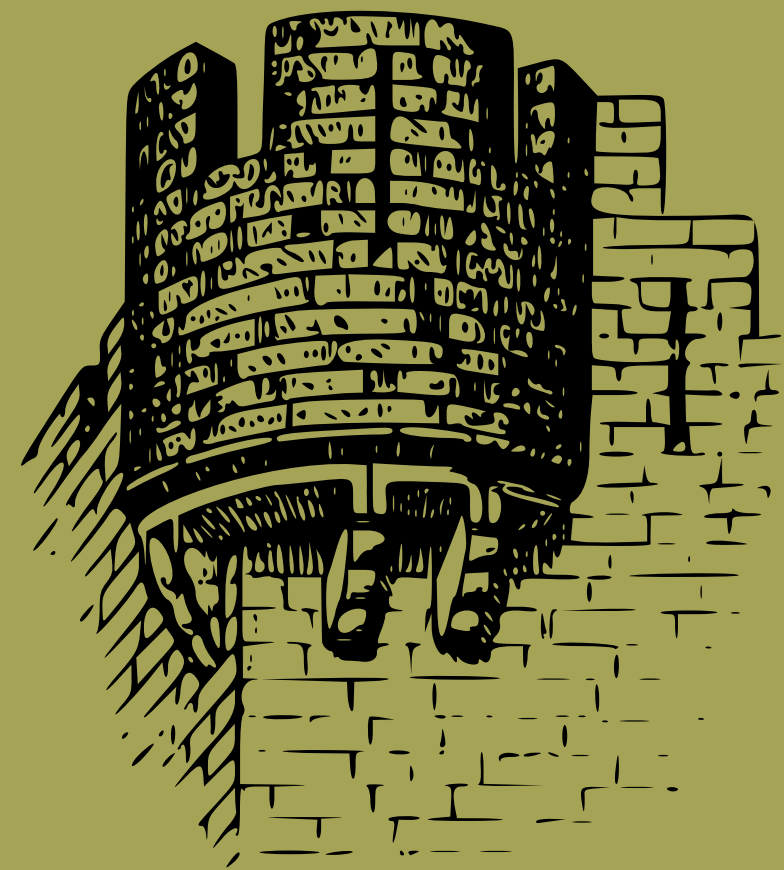
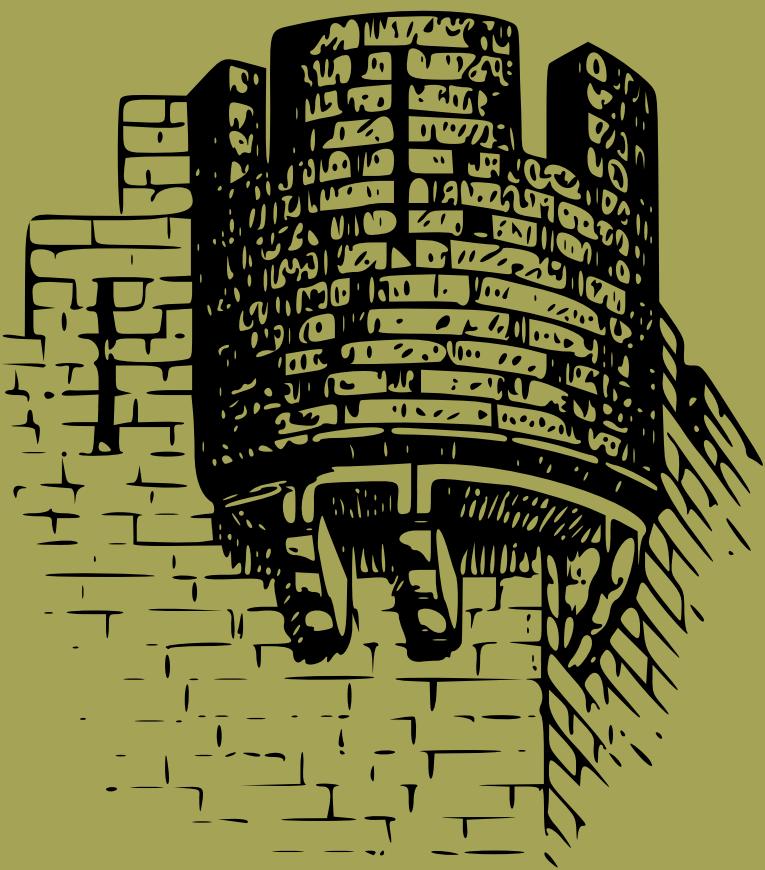
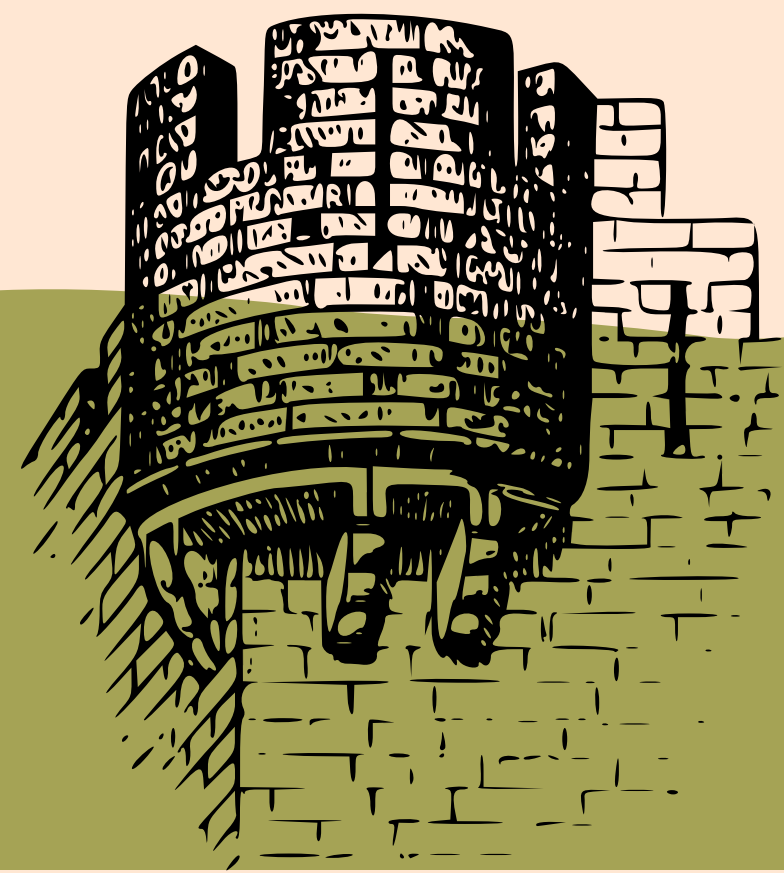
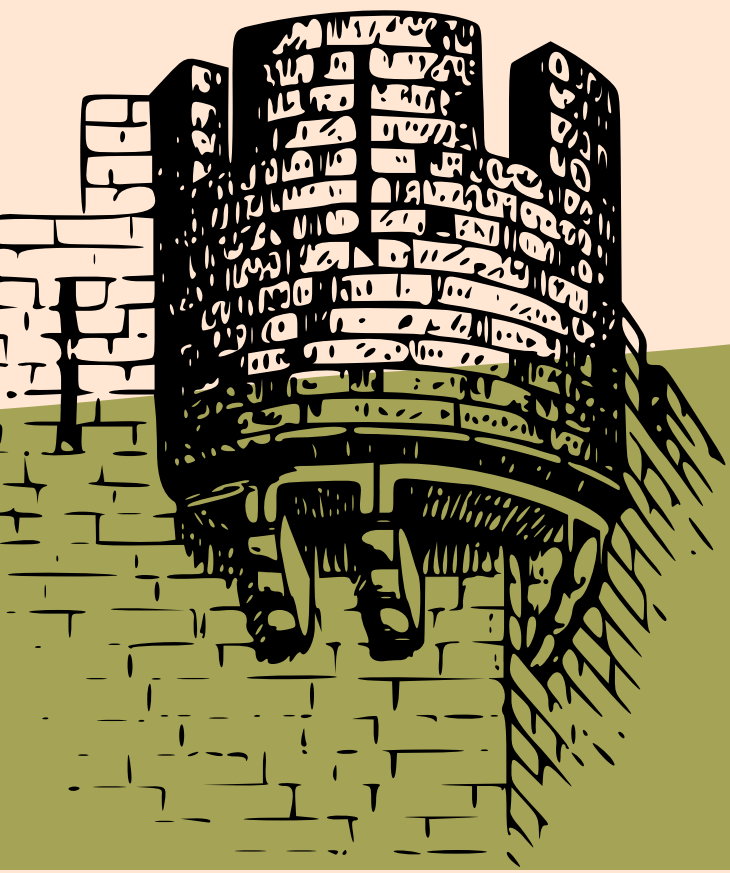


Meet

Catrin Glyndŵr



You are about to meet a
character from history



Her name is Catrin Glyndŵr and she is the daughter of the great Welsh leader, Owain Glyndŵr.

Owain Glyndŵr lived over six hundred years ago. To begin with, Owain got on very well with the English. He served the King, Richard II, he lived in London for a time and he fought alongside the English against the Scots.



He was a very wealthy man and he spoke English and French as well as Welsh. Catrin grew up with her family close to the English border. Her people were known as the Marcher Lords and one of their jobs was to protect the border for King Richard.

Then, Henry IV took the crown of England from Richard and all that changed. Henry was not nearly so friendly towards Owain and they became enemies.

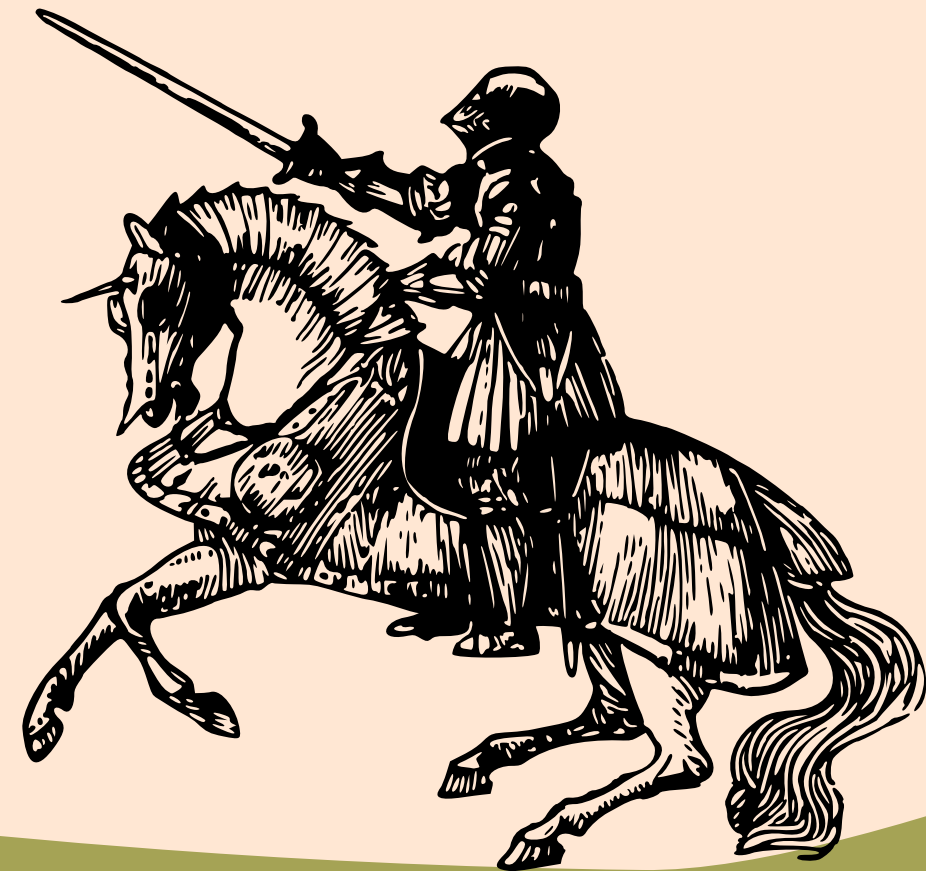


Catrin's home is at Sycharth Castle near Oswestry and it was said to be so welcoming to every traveller that 'No want or hunger or shame, or thirst will ever be in Sycharth'.

Made of wood, the castle was built in two parts. Around the outside was a bailey where most of the people lived, protected by a wall. Inside the Bailey was a hill called the motte and on top of that was a tower known as the keep, where the wealthy folk lived. If the castle was attacked, everyone would run up to the motte and raise the drawbridge off the keep. From there, they would try to fight off their enemies.



Catrin is married to a man called Sir Edmund Mortimer. He had originally fought for the English king and was captured by Catrin's father but after a while as a prisoner, he changed sides and joined the rebellion.



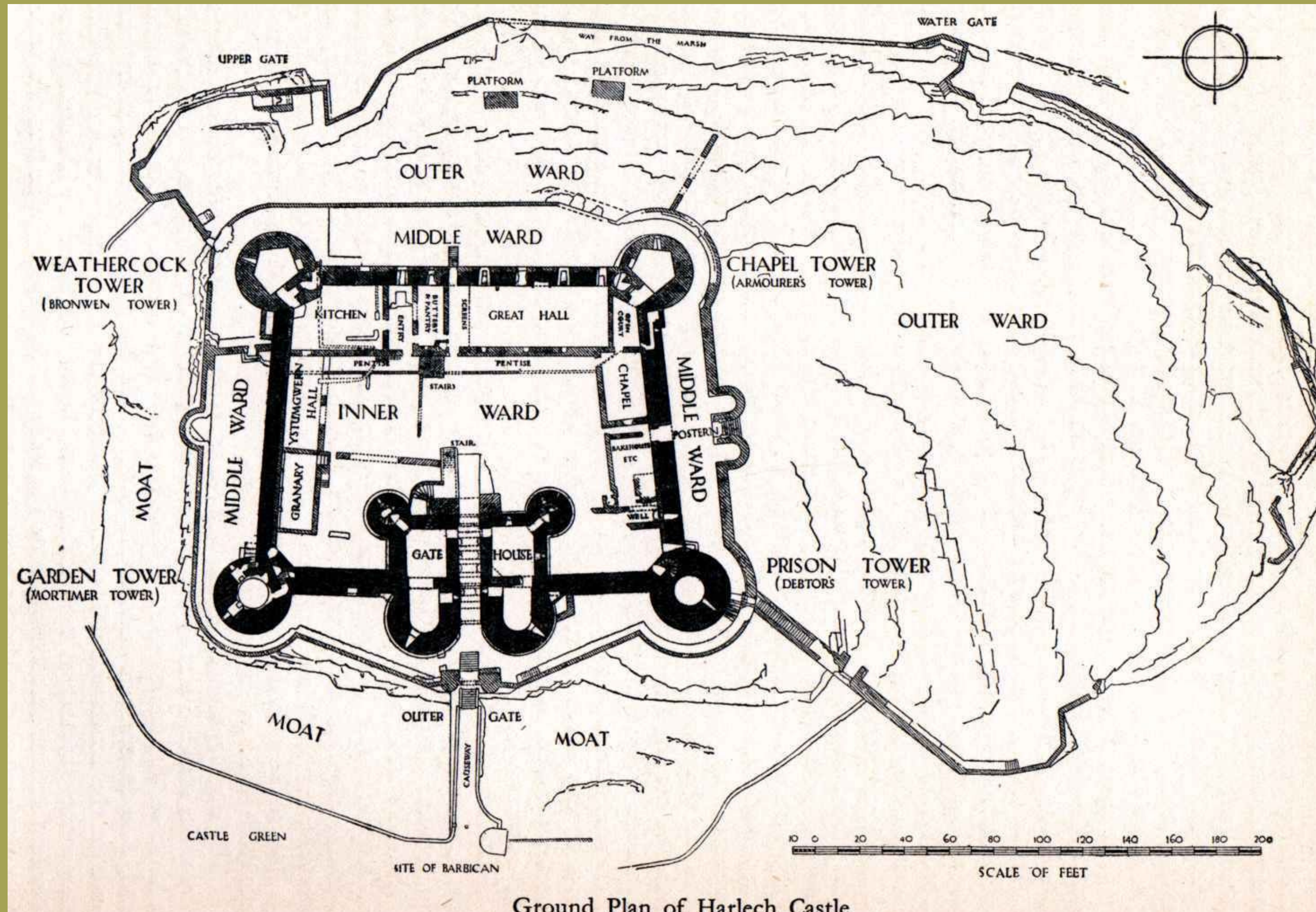
The English attacked Sycharth Castle and finding that Owain Glyndŵr and his family had gone, they burned it to the ground.

Luckily, Catrin and the others had escaped to Harlech where the stone-built castle gave them better protection.

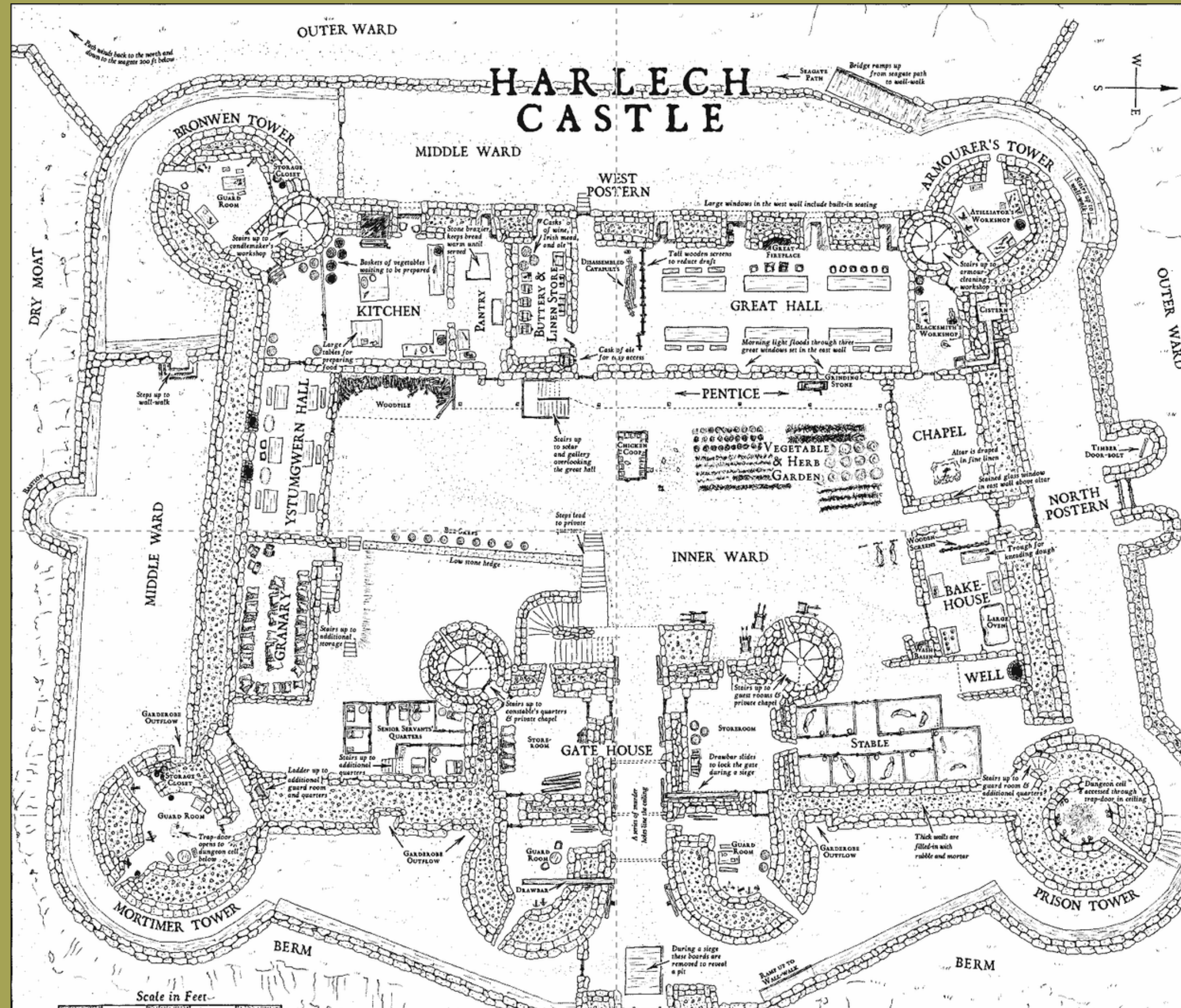
It was there that they waited for the English to attack.



Harlech Castle Map

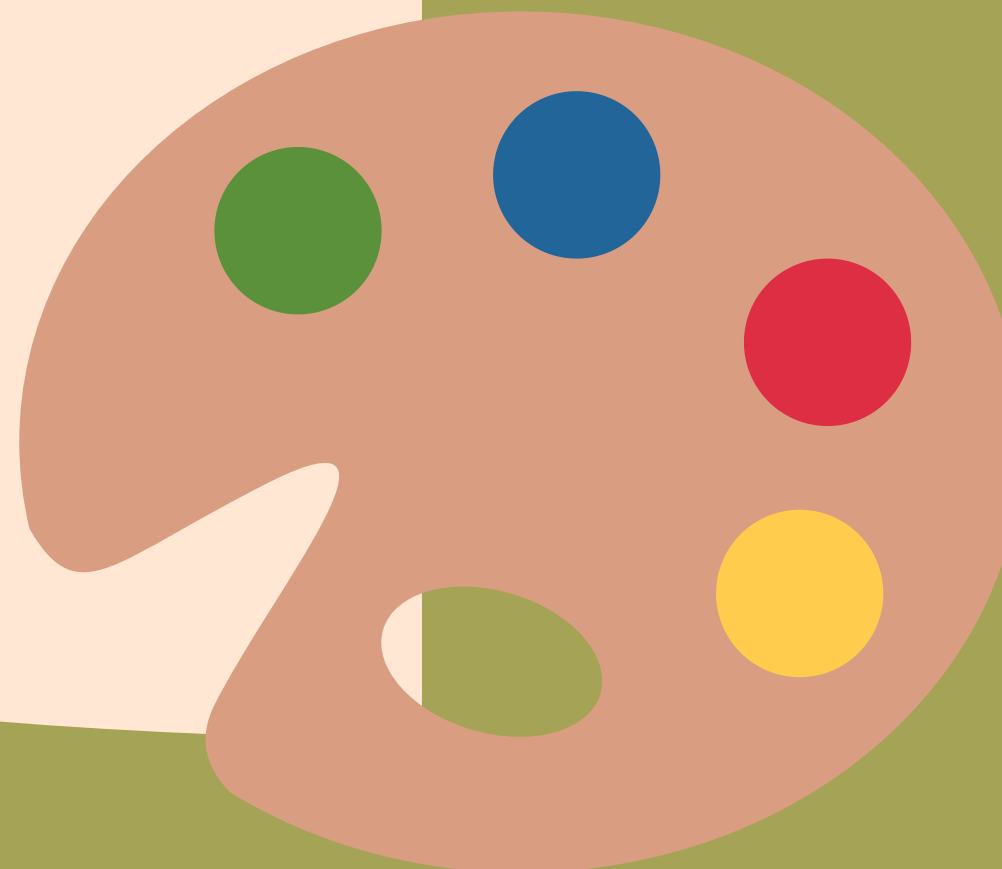


Harlech Castle Map





Activity Time



FIND OWAIN GLYNDŴR!

Make puppets based on Owain Glyndŵr and his family. Think carefully about the way they would dress and what they might look like, then draw your designs before you start to build the puppets.

To make them, you might use scrap material that can be sown or glued together



or you could use flat pieces of cardboard, joined together with split pins and coloured in.

Once you've made your puppets, you are ready to enact the story of Owain Glyndŵr, his family and supporters! Write out your story, rehearse and perform it.

You might even film it so that other people can enjoy your work!

Build your own castle!

1

Use strips of cardboard box, papier mache, or any other materials you can find, to build a castle that will protect Catrin and her family.



2

Look at plans of different castles to inspire your design. Remember that many castles had an outer wall surrounding the bailey, where most people lived, and a stronghold called a keep that sat on top of a hill—the motte.



3

You might even have a drawbridge that can be pulled up to stop attackers getting into the keep. To help Catrin to escape, you will need to design tunnels that allow her to get away without being seen by the enemy. The more tunnels there are, the better are her chances!



Curriculum



Humanities

- * Enquiry, exploration and investigation inspire curiosity about the world, it's past, present and future.
- * Events and human experiences are complex, and perceived, interpreted and represented in different ways.
- * Human societies are complex and diverse, and are shaped by human actions and beliefs.

Expressive Arts



- *Creating combines skills and knowledge, drawing on the senses, inspiration and imagination.